

Wireless IoT Sensor Solution

Water Level Measurement

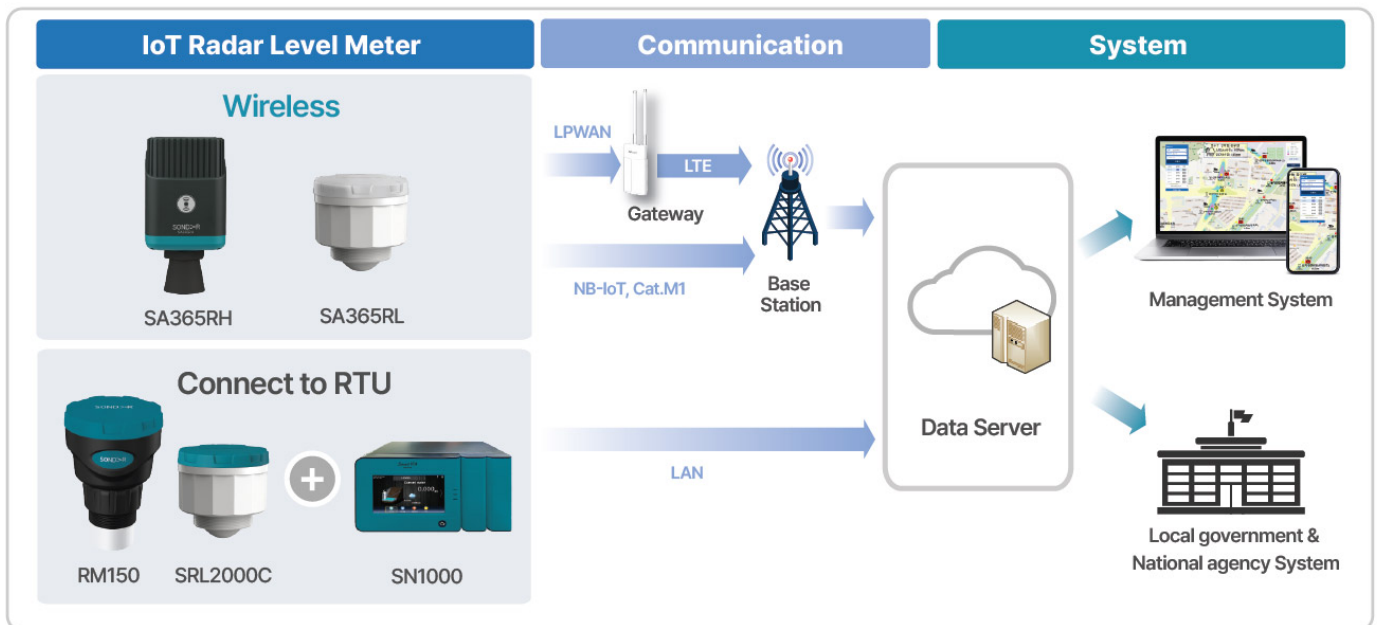
Sewer system · Small river · Urban flood depth



ISTEC is a smart sensor solution company

providing **Golden Hour Solution** with IoT level meters and management system for saving human lives and social cost from water-related disasters such as urban floods and river overflow, etc.

System Overview



Applications

Sewer system



Pilot test in Seoul capital city

First **Wireless** radar level meter in Korea installed and operated from June 2024



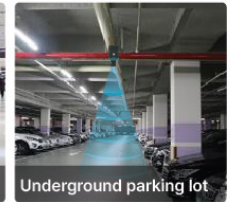
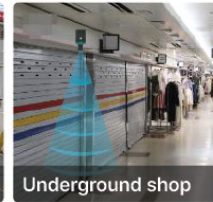
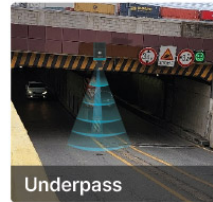
Urban flood depth



Small river level



Underground facilities



SOND>R Air

WIRELESS IoT Level series
for golden hour solutions

New Radar Level Meter



SA365RH



SA365RL



1 All-in-1

Sensor, battery, communication are all installed in the compact size



2 Simple installation & maintenance

No line construction, Install anywhere



3 Remote setting for sensing/transmission interval

Short cycle only during heavy rains (once per 30sec)



SAVE TIME & COST

For frequent transmission & power
Connect IoT level meter to Smart RTU .

Specifications

	IoT Radar Level Meter				Smart RTU	
	Wireless		Connect to RTU		Model	SN1000
Model	SA365RH	SA365RL	RM150	SRL2000C	Model	SN1000
Measuring range	0.2 ~ 15m	0.2 ~ 20m	0.2 ~ 15m	0.2 ~ 20m	Display	TFT-LCD Touch
Beam angle	10°		10°	6°	Temperature	-20°C ~ 60°C
Frequency	60GHz		60GHz		Channel/relay	Max 3CH(RS-485)
Sensor material	PP		PVDF		Input	Analog(4~20mA)1EA, Digital 2EA
Temperature	-30°C ~ 70°C		-30°C ~ 70°C		Material	ABS/Steel
Communication	NB-IoT, Cat M1		4-20mA / RS-485		Power	AC/DC(Solar) 20-25V
Protection class	IP68		IP67	IP68	Output	RS-485(Mode-bus)
					Transmission	1minute (adjustable)

*Product design and specification can be changed.

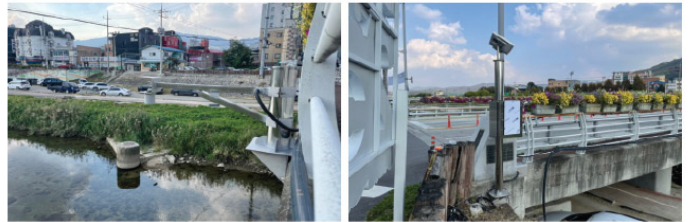
Installation Cases in areas vulnerable to flooding

Since 2005, ISTEK has been providing early warning solutions combining sensors and communication.

Flood prone road (Sejong City)



River level (Pocheon City)



Flood prone area (Incheon City)



Underpass level (Seoul City)



River level (Incheon City)



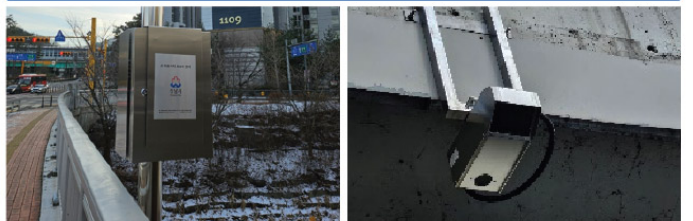
Flood prone road (Yeongwa)



Flood prone road (Asan City)



River level / flow (Seongnam City)



IS Technologies Co., Ltd.

M-1602,1603, Songdo IT Center, 32, Songdogwahak-ro, Yeonsu-gu, Incheon, Republic of Korea

H. www.istec.co.kr T. 032-850-2600 E. wm_sales@istec.co.kr